

The VHF



Journal

Volume 66, Issue 7

March 2014

The next regular meeting of the Rochester VHF Group will be Friday, March 14th at 7:30 PM at Spencerport Wesleyan Church 2653 Nichols St., Spencerport

Map and directions on last page

In this issue:

- The Chairman Speaks!
- Secretary Report
- Treasurer's Report
- Vice Chairman's Report
- Classified

Topic: Bring a Gadget

RVHFG's Beacons	
Band	MHz
6m	50.078
2m	144.298
1.25m	222.050
70cm	432.300
23cm	1296.257

The Chairman Speaks! Bob Nezelek W2CNS

Groupers: I hope that everyone survived the winter and have a list of antenna projects to work on. I have several dish projects.

Last month we had a fantastic tour of the University of Rochester Laser Lab. It is amazing work that is going on.

This month's program is "Bring a Gadget" and be prepared to talk about it. I plan to bring a 1296 MHz High Power solid state PA and talk about the design of it by W6PQL. I hope that someone can talk about the new "dongles" that are available now.

Work continues on preparation for the Microwave Update 2014. The folks at the AWA will be setting up some special early microwave equipment exhibits in addition to their regular displays.

Continued....

Published by
Rochester VHF Group
PO BOX 92122
Rochester, NY 14692
Editor: Tom Jennings, KV2X

The VHF Journal is published by the Rochester VHF Group monthly except June-August. The subscription price is included in the membership dues. If you elect to receive the PDF version by downloading it from our website, dues are US\$10 per year. In this case, you will be notified by email the day it is available for download. If you choose to receive the hardcopy Journal by Postal delivery, the dues are US\$15.00 per year. Articles and comments should be submitted to journal@rvhfg.com

The Chairman Speaks!

Continued...

Also be prepared to support the W1AW/W2 activity. Let's put as many as we can VHF and up bands on the air. We plan to have two local EME stations active.

Also, try to bring a guest to the meeting.

W2CNS Bob Nezelek

Secretary Report

Freddie Sulyma, WB2GFZ

An official Rochester VHF Group Meeting was not held on 14 February 2014.

A gathering of members and quest attended a presentation at the University of Rochester's Laser Energetic Lab. The presentation detailed the history & mission of the lab with a description of a few parallels between RF engineering and lasers. The talk was followed by tours of both the Omega & Omega EP lasers.

Attending:

Tom (KV2X), Bob (W2CNS), John (WB2BYP), Dave (AB2YI), Bill (K2TER), Mystery Guest & Ev (W2EV).

VHF Group

Treasurer's Report (2/14/14)

Freddie Sulyma, WB2GFZ

CHECKING/CASH ACCOUNT

Balance (as of 1/10/2014, Cash = \$120.00, Checking = \$2000.09)		\$1870.09
Income:	\$00.00	
Tim (KB2RMC) 2/10/14, Len (KC2PCD) 2/11/14 both paid \$10 via PayPal (Membership/Renewals, Money not yet realized)		
Expenses:	\$000.00	
Current Balance (\$120.00 Cash, \$1750.09 Checking):		\$1870.09

Respectfully submitted,

Freddie Sulyma, WB2GFZ, Treasurer

The Vice Chairman's Report

By Tom Jennings KV2X

Please mark your calendars for the RDXA/RVHFG AWARDS BANQUET which will be Saturday, April 26, 2014 at Lilian's in Penfield. Cocktail Hour begins at 6 PM. Dinner begins at 7PM. The menu will be similar to last year and the cost per person will remain \$20.00. Sign up and directions to follow.

I hope we will get a good turnout for ARRL Centennial QSO Party VHF operation in May. RDXA will be hosting W1AW/2 from May 21st thru May 27th has set up a terrific web based sign up spread sheet (<http://nyqp.org/wordpress/w1aw-schedule/index.php?date=2014-05-21>) and a W1AW/2 Host Station Request form (<http://nyqp.org/wordpress/w1aw2-host-station-request/>). I signed up for May 21 8 to 10 PM 2 meters cw. More SSB/FM/CW ops are needed over the 7 days.

Suggested VHF/UHF frequencies:

Meters	CW	Phone	Digital
6	50.000 – 50.125	50.100 – 50.500	Use normally accepted frequencies
2	144.010 – 144.200	144.100 – 148.000	Use normally accepted frequencies
1.25	222.000 – 225.000	222.000 – 225.000	222.000 – 225.000
70cm	420.000 – 450.000	420.000 – 450.000	420.000 – 450.000
903 MHz & higher		One QSO per band, per eligible station is allowed regardless of mode	
Satellites		One QSO on any satellite per eligible station, regardless of mode, is allowed.	

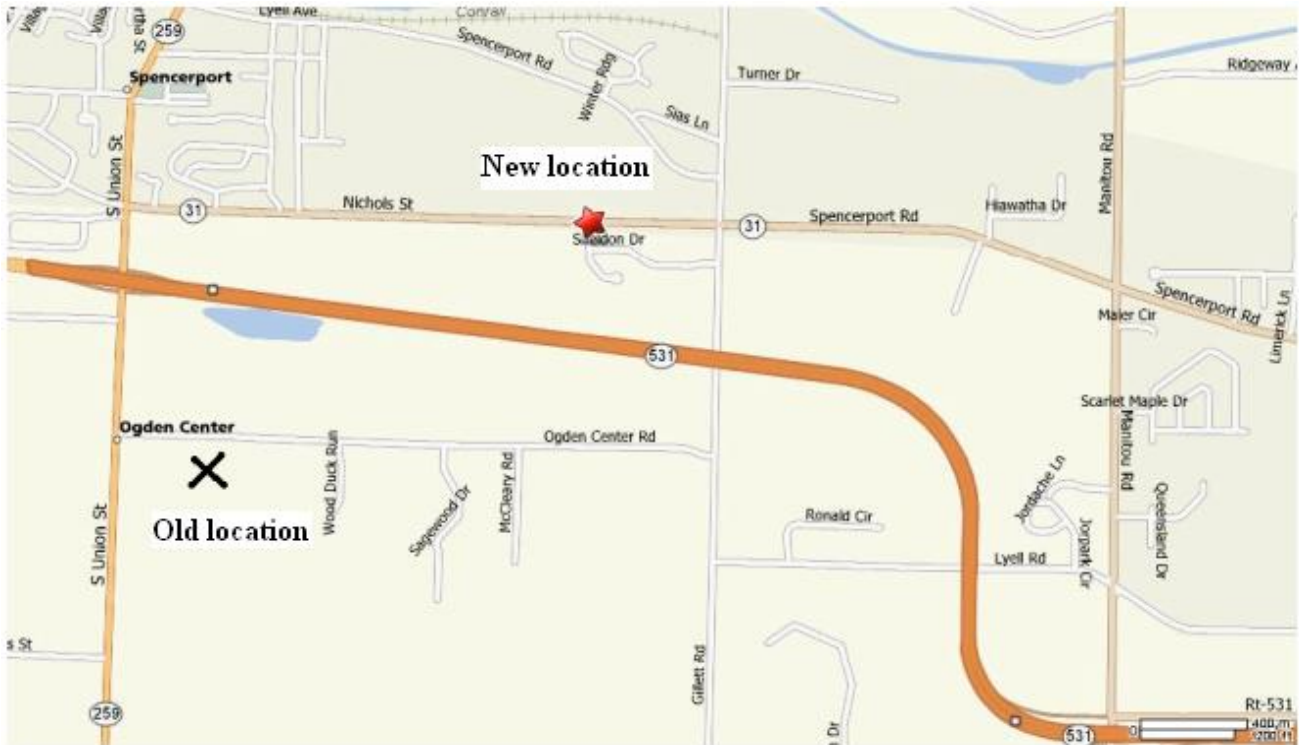
So check your calendar and make some time to operate. I hope to see you all at the March meeting!

Tom KV2X.

Classified Listings

None this month

Meeting Location



Spencerport Wesleyan Church on 2653 Nichols St. (actually Hwy. 31).

Directions from Rochester:

531W exit RT. to 259N

259N turn Rt. on 31E (first Rt. at traffic light)

Look for Spencerport Schools Bus Garage on left

Take first Rt. on Sheldon at A-framed church, park in rear lot.

Enter gray metal door under fire escape.