

The VHF Journal

Published by The Rochester VHF Group January 2001 <http://vhfgroup.rochesterny.org>
Club memorial call: W2UTH

HAL 9000



Are you ready for 2001, Dave?

By Subscription only. \$10 US / \$15 CAN Annually

VHF SS 20-12 January 2001

VHFBILL



Welcome to the January 2001
edition of the RVHFG VHF Journal.

"I'm sorry Dave, I can't do that."

When was the first time you saw that movie? Well, technology hasn't gone as far as was predicted ... yet. Should we be glad, keeping our friend HAL 9000 in mind? In the end, though, it looks like Arthur C. Clarke was right, just off by a few years.

I ponder these things as I look back on the last few weeks. In early December, my system had picked up a variant of the **W95.Hybris.gen virus**- (more info can be found on this at www.symantec.com/avcenter/venc/data/w95.hybris.gen.html ... There's a new McAfee DAT file dated 12/20/00 (DAT4112) on it). This is the so called "Snow White" virus that began circulating right after US Thanksgiving. I've been damn lucky for over a decade at avoiding these things: at the end of the millenium my luck finally ran out.

Needless to say, a few friends, one downloaded copy of **McAfee 5.15** and the updated DAT files later, and you now have the Jan 2001 VHF Journal in your hands. I ended up wiping the whole hard disk, Windows 98 system and all, and reinstalling all my program files (Pagemaker, Photoshop, Acrobat, Image Ready, Word Perfect, etc etc etc) just to be absolutely sure I would never pass this sucker on to anyone else. **LUCKILY** I had picked up a new CD burner at the end of November- and all my written data files (including the back issues of the Journal) were backed up on disk **JUST** before the virus arrived.

HAL 9000 defined the hi-tech future in 1968. We were living in a time of turmoil, of punch-card computer programming. Transistors were a new and exciting part of your ham rig. There were no solid state hi-power finals- on any band you operated you had one choice: TUBES. VHF FM operation was still in it's infancy and the rigs being used in no way resembled the gear of 2001. **BUT ...NASA was yet to land a man on the moon, so the possibilities were endless.**

Now I can take or leave George Orwell's **1984**, for me **2001: A Space Odyssey** was the future, and it still is, viruses notwithstanding. But ask yourself this: **Is your personal HAL 9000 in the hamshack ready for 2001? And how about you? 73 es see U in the VHFSS, eh! ...de VE3IEY**

To Subscribe: Send your address, call, e-mail address and \$10 US funds (or \$15 CDN funds) to: **The Rochester VHF Group, PO Box 92122, Rochester, NY, 14692.** You may elect WEB or MAIL delivery for the same price. You will be notified the very day it is available for download. If you elect delivery by mail, copies are in Black and White- sorry!

Commentary and articles: via e-mail to editor VE3IEY: tantonr@kingston.net. Use standard ASCII text, Corel's Word Perfect or send as a regular e-mail message. **Photos and drawings:** via e-mail, and can be sent in any format that is available (JPG, GIF and TIFF are most common).

Assistant Editor, printer, membership & data-magician: N2KXS

Advertising space is now available in the Journal. Contact the editor for One thru Twelve month rates. **Layout services are free of charge.**

This publication is Copyrighted by the Rochester VHF Group. It has been created using Corel's Word Perfect 2000, Adobe Photoshop 6.0, Adobe Pagemaker 6.52, & Image Ready 2.0. **It is best read with Acrobat 4.0** Other NFP publications may excerpt articles herein provided credit is given and subscription information to the Journal is reprinted with it.

The Rochester VHF Group

Club memorial call: W2UTH

Club website @ <http://vhfgroup.rochesterny.org>



Our "Who's Who":

Officers:

Chairman: K2AXX Mark Hoffman
(716)243-5606 k2axx@arrl.net
Vice Chairman: W2DYY, Russ Schroder
Secretary: N2JMH Jim Howard
(716)637-4554 n2jmh@arrl.net
Treasurer: N2OPW Paul Meyers
(716)425-1301 N2OPW@qsl.net
Director (Even year): KB2VGH Jeff Luce
(716)424-8406 kb2vgh@amsat.org
Director (Odd year): K2DH Dave Hallidy
(716)728-9517 k2dh@frontiernet.net
Past Chairman: NS9E Tim Stoffel
(775)972-9470 lionlamb@servtech.com



Appointees:

Contest Chairman: N2JMH Jim Howard
(716)637-4554 n2jmh@ibm.net
Awards manager: N2JMH Jim Howard
(716)637-4554 n2jmh@ibm.net (see above)
Club memorial Call Trustee: N2WK Wayne King
N2WK@arrl.net
Banquet Chairman: WA2ZNC Len Gessen
(716)229-5470 wa2znc@juno.com
Picnic Chairman: AA2WV Scott Ballou
Newsletter Editor: VE3IEY Tom Richmond
(613)634-1855 tantonr@kingston.net
Newsletter Publishing: N2KXS Judy Stonehill
(716)582-2074 jstonehi@frontiernet.net
Membership Manager: N2KXS (see above)
Internet Webmaster: K2AXX (see above)
Mailing list Majordomo in charge: KB2VGH (see above & below)



Jeff, KB2VGH sez: "There is only *one* mailing list [you'll ever need...]" Rvhfg@vhfgroup.rochesterny.org
It is setup to broadcast to all RVHFG members

**THIS PUBLICATION was compiled, edited, and typeset on
Amherst Island, Ontario, Canada (FN14pd)
>It was published in Rochester, New York, USA (FN13)
The World's Image Capital**

Your Andrew Cable Connection!
TOM WHITTED, WA8WZG
PORT CLINTON, OHIO - EN810M
50 MHz - 24GHz
PHONE: (419) 732-2168 FAX: 732-2944
E-MAIL: WA8WZG@WA8WZG.COM

January Meeting Notice

DATE: 12 JAN 01 7:30 PM

PLACE:

111 Westfall Road, Rochester, NY

Subject:

The 2001 January VHF SS

Presented by our illustrious RVHFG Contest Chairman,
Jim "Psycho Rover" Howard, N2JMH

Contest Contest Contest!

=20 to 21 JAN 2001 =

DE: N2JMH

The contest chairman says:

All right folks, it's that time of year again, the **January VHF Sweepstakes** is only a few weeks away. **What's that, you're not ready?!** Well why should this year be any different than the rest. Hopefully that really is not what you are saying and you are looking forward to an **exciting** and **FUN** contest.

A couple keynotes for you to mill over. I know that all do not enjoy contesting as much as others, but let's face it, with the hectic schedules we try to keep, the January contest is the best time to get on and get the most bang for your buck. Especially with those microwave bands you have spent a small fortune and endless hours working on. Speaking of the "others", that is the ones that do enjoy spending 35 hours in front of their radios, why not get on the air with what equipment you have and humor the poor saps.

The RVHFG has a proud heritage of posting respectable scores in the club competition category and we need everyone to operate the contest and submit a log. Remember that size is not important!

Here are some of the rules regarding club competition as taken right from the ARRL web site. These are not the complete rules, but they are available at <http://www2.arrl.org/contests/announcements/rules-all.html>

8.4.1.3. All stations and all operators must reside within 175 miles (282 km) of the club's center.

8.4.1.4. All members must attend at least 2 club meetings

Chairman's Rant

...de K2AXX

In my usual style, I've got NOTHING on the big tower. No antennas, dishes or feedlines. Nothing. As usual, I've waited until the coldest air of the season to even CONSIDER installing antennas. So, I'm working feverishly in the shack to try getting what gear I can working for the upcoming contest.

WHAT? You didn't know about a contest coming up? Well, then you are in for a treat! Just show up to the next meeting and N2JMH will tell you all about it! For the last time, though – **IF YOU HAVEN'T MADE A MEETING YET THIS YEAR, AND WANT TO COMPETE FOR THE ROCHESTER VHF GROUP AWARDS – YOU HAVE TO QUALIFY FOR YOUR 2 MEETINGS!** Subtlety isn't my strong suit!



So, what are you planning on doing in the contest? Well, even though I doubt I'll have all my stuff really working – I'm doing 5-6 hours/night to try getting all that I can operational. I fully expect to have 6m, 2m, 222 and 432 working – and with some luck 903/1296. 10GHz will likely be a tripod-setup, where if a rover makes position I'll haul the junk outside and try it that way. 2-5GHz MIGHT make an appearance, but not very likely. **HOWEVER** – I will be operating. I **WILL** be trying to make as big a score as I can. I want to try doing my small part for the RVHFG club score. Now let's be serious. If you spend 1 hour Saturday and 1 hour Sunday, you should be able to rack up 50 QSOs / 4 Grids on FM alone. Just do it. Those 200 points are really valuable (just like a vote!) to us. Enough preaching – hopefully you won't need it. I'm really looking forward to hearing all of you on, and working all of you who are reading this column. Believe me, that's what it is all about. Just getting on the air, communicating with one another. Isn't that what we have all this radio stuff for anyhow?

Downeast
Microwave
Inc.

Everything for the microwave experimenter
in 2001 and Beyond
<http://www.downeastmicrowave.com> (908)996-3584

per year to be eligible to submit an entry. (However, if the person has not been a member for a year's time, they must have attended one meeting as a member prior to the contest.)

8.4.1.5. Those club members who are disabled to the extent that they are unable to travel are exempt from the two meetings per year rule. However, they must be regularly active in club affairs.

8.4.1.6. To be considered bona fide, a member must be active in club affairs.

8.4.1.7. Members living outside 175 miles and members that operate stations outside 175 miles may not compete in the club competition. (See rule 8.6.)

Log submission to the ARRL has changed a little this year. If you are unfamiliar with the rule changes you should go to the ARRL web site or QST and familiarize yourself with these changes.

Your log should be submitted to the ARRL yourself with the Rochester VHF Group listed as your club as well as a copy sent to: January@vhfgroup.rochesterny.org or to: The Rochester VHF Group, PO Box 92122, Rochester NY 14692 if you wish to be considered for local club awards and the Rochester Cup scoring.

If you submit a log on behalf of another club for the Rochester Cup please be sure to clearly indicate which club your score is to be considered for. You must also clearly indicate what category you are entering for the local awards program. There are also changes in the local awards this year so be sure to read on for comments from the Awards Chairman.

Please try to attend the January 12 meeting, it is held at 7:30pm in the Monroe County Social Services Building as usual. It is a good way to be sure you have made your 2 meeting minimum and I will be going over rule changes for this year as well as any questions you might have. If we don't see you there I hope to catch you on the air for the contest.

The Awards Chairman says:

Is it broke? Don't know, but we are going to try to fix it anyway. This year we are going to fall in line with the ARRL in respect to categories of operation for our local awards program. The intent of this is to make it clear what category you are operating in for local awards.

When you submit your log electronically to the ARRL you can also send the same log in to the VHF group. It cannot get any simpler than this ,right? Sifting through 30-40 logs is time consuming enough as it is for the contest committee without having to question which class they belong in.

Here are the classes, right from the ARRL

2.1. **Single Operator:** One person performs all transmitting, receiving, spotting, and logging functions as well as equipment and antenna adjustments.

2.1.1. **Single Operator Low Power:**

2.1.1.1 Power limits on any band may not exceed the following:

2.1.1.1.1. 50 MHz and 144 MHz--200 W PEP.

2.1.1.1.2. 222 MHz and 432 MHz--100 W PEP.

2.1.1.1.3. 902 MHz and above--10 W PEP.

2.1.2. **Single Operator High Power:** Power limits on any band exceeds the limits for the Single Operator Low power.

2.1.3. Use of spotting assistance or nets (operating arrangements involving other individuals, DX-alerting nets, packet, etc) is not permitted.

2.1.4. Single Operator stations are allowed only one transmitted signal at any given time.

2.1.5. Both categories of Single Operator stations compete for all-band and single-band awards.

2.1.6. Overall and single-band winners are recognized both in QST score listings and in awards offered.

2.2. Single Operator Portable: (formerly QRP Portable)

2.2. 10 W PEP output or less.

2.2.1. Portable power source.

2.2.2. Portable equipment and antennas.

2.2.3. **Single Operator Portable stations must operate from a location other than a permanent station location.**

2.2.4. Single Operator Portable stations may not change locations during the contest period outside of the original 500 meter diameter permitted circle.

2.3. **Rover:** One or two operators of a single station that moves among two or more grid squares during the course of a contest.

2.3.1. A rover vehicle may transport only one station using a single call sign.

2.3.2. A rover may not operate with more than one call sign.

2.3.3. Rover vehicles must transport all the equipment, power supplies, and antennas used at each operating site.

2.3.4. Rovers sign "rover" on phone and /R on CW after their call sign.

2.3.5. All Rovers are encouraged to adopt operating practices that allow as many stations as possible to contact them.

2.3.6. Rover operators may submit separate logs for single operator (fixed station) in addition to their rover entries. Rovers submitting a score for inclusion in a club competition must also include a secondary summary sheet indicating the portion of the score which counts for the club score if any of the QSOs submitted take place outside of their club's territory.

2.4. **Multioperator:** More than one person performs transmitting, receiving and logging functions, etc. Stations must locate all equipment (including antennas) within a circle whose diameter does not exceed 300 meters (1,000 feet). Multioperator stations may be divided into subcategories:

2.4.1. **Multioperator (Unlimited):** Stations submit logs with more than four bands used.

2.4.2. **Limited Multioperator:** Stations submit logs with a maximum of four bands used. (Logs from additional bands used, if any, should be included as checklogs.)

Now you know the classes of operation, clearly indicate it on your log. Unlike other years, if you submit your score in single-op low power your score does not qualify for the single-op high power regardless of the score. No more double dipping if you want to call it that.



The award structure for the club will consist of this, of course depending on sponsorship.

- 1st-3rd Single-op high power
- 1st-3rd Single-op low power
- 1st-3rd Rover
- 1st-2nd Unlimited Multi
- 1st Limited Multi
- 1st QRP portable

Also available are our specialty awards
1st FM only-Open to anyone, RVHFG member or not
1st Single band 50, 144, 222, 432, 903 & 1296, 2-5 gig, and new this year 10gig
1st Most Improved Score- Must enter same class as last year and had a minimum score of 5000 points to be eligible (the limited single-op and medium single-op classes from last year will be included in the SOLP class this year only in consideration of this award)

If you sponsored an award last year you will hear from me shortly in writing. Past sponsors will be given first choice of awards they would like to sponsor. After that any award is open to any individual that wishes to make a sponsorship. Please try to work with me to get the above-mentioned awards sponsored first then we can get creative from there.

Of course if you wish to sponsor you do not have to wait to hear from me, send your money to the club mailbox with the award you would like to sponsor or you could choose to let the Awards Chairman place the sponsorship as he sees fit. Award Sponsorship prices are \$30 for 1st place, \$29 for 2nd place, and \$28 for 3rd-5th place.

The Psycho rover says:

I personally know that this January there will be a fine bunch of rovers running around out in the frozen country side. Included in this list is k2ter, n2opw, n2kxs, wo2p, n2jmh, wb2byp and others that I have not got a definite confirmation from as of this writing but I am hopeful that n1mu, k2ldt and anyone else who cares to do this will be on the air.

I should not have to tell you what a rover's efforts can do to your score, but if you are bored, open your favorite contest program and enter in working k2ter/r with 10 bands and working him in the 4 grids around us. Easily workable for most of us in the greater Rochester area. Can you say WOW; big scores are easy to come by with the rovers out and about.



We, the rovers, have been working together for the past month or so, trying to organize our efforts. Don't get me wrong now folks; I am not suggesting a grid circle jerk by any means. **That is against the spirit of the rules, and despicable as far as I am concerned.** What I am hoping for is some advance planning to make it easier to find the rovers and make sure you, the fixed station, work all the bands from as many possible grids. I am not going to go into detail in this writing, but I will guarantee that it will be gone over in length at the January meeting.

One more little ploy to get you to the meeting and be assured of your 2 meeting attendance rule. I also have to admit that I am personally motivated to make this work, as n2wvk and I do stand to gain from this because we will be out in our rover, working hard to shake the rookie mistakes we have made in the past. Todd and I are shooting for 125,000 points, and it seems that the psycho title might get shifted over to Todd soon, as he seems to be as hopped up as much as I am. We will make this score or kill each other trying!

Any questions, comments, or concerns you can get in touch with me at:
n2jmh@arrl.net or at home in the evening 716-637-4554

“Life ain’t all beer and skittles, and more’s the pity”

George DuMaurier

I drink when I have occasion, and sometimes when I have no occasion”

Miguel deCervantes

Letters, letters, we get letters...

“I have alot of aluminum for elements and also masting and assorted wire. I would appreciate it if anyone was interested in any or all of it, if they would email me or call me at 315-986-7244. That way I can make arrangements to meet them (in Victor, NY) to look over and pick up the stuff. While it is not of much value to the average joe, I think any ham who is into building or repairing would be interested in it.

I also have some of dad's (W2UTH) original logs, award certificates and newspaper clippings of his accomplishments. I am not sure if the club has any type of historian that would be interested in any of this but I do have it... there is much stuff that had to do with dad that we have come across. The scrapbooks with all Dad's accomplishments and such is really something to see. So if anyone is interested, would you please have them contact me.

I would also appreciate it if you would put in the newsletter if anyone knows who has Dad's “bug” I would really appreciate knowing and possibly buying it if the owner is willing to part with it.

(Editors note: I recall this as a single paddle mechanical bug made by SPEEDEX, with a black crinkle finish base, a black bakelite paddle, a round rod to hold the variable weight, and a donut shaped round weight with a single set-screw. I would recognize it in a second at twenty paces as I made my first 2m AU QSO with it at W2UTH's station.)

December RVHFG Meeting Minutes

The fourth meeting of the year took place on December 8, 2000 at 7:30 pm in the Monroe County Social Services Building with 28 members in attendance.

Mark K2AXX opened the meeting at 7:35 pm and asked everyone to stand and introduce him or herself and give an activity report.

The Secretary's report as printed in the Journal and the meeting minutes as read for November were accepted by Dave K2DH and seconded by Jeff KB2VGH.

Old Business: Jeff KB2VGH reported that there were still a few RVHFG mugs available. Jim N2JMH reported that all RVHFG All Band Sprint logs are due and announced some rule changes for the Rochester Cup Competition this year.

New Business: The contest chairman reminded all that there were about 6 weeks till the January VHF contest. Rus W2DYY announced that he would like to add to the club website information such as rover sites, a link to Topozone and multi-op station locations and he would welcome comments from all.

Meeting adjourned at 8:25pm, accepted by Frank K2OS and seconded by Bob N2USB, and after a brief intermission we were treated to an educational as well as funny presentation from Down East Microwave Incorporated owners Steve and Sandy Kostro.

Jim Howard N2JMH Secretary

“Fish is brain food- what does that tell you?”

“That none of my friends eat fish!”

Red Green, December 2000

More combination classics: Great works of fiction

“Lorna Dune” - An English farmer, Paul Atreides, falls for the daughter of a notorious rival clan, the Harkonnens, and pursues a career as a giant worm jockey in order to impress her.

“Paradise Lost in Space”- Satan, Moloch, and Belial are sentenced to spend eternity in a flying saucer with a goofy robot, an evil scientist, and two annoying children.

From the Treasurer

By Paul N2OPW December 21, 2000

CHECKING ACCOUNT

Previous Balance..... \$505.14

Income:

Dues collected..... 50.00

50/50 profits..... 00.00

Mug Sales..... 0.00

BOD dinner 60.00

5GHZ project 2692.00

Expenses:

Newsletter Supplies..... -40.30

BOD dinner expense..... -80.00

5GHZ project/FETS..... -3023.72

Current Balance..... \$163.12

SAVINGS ACCOUNT

Previous Balance.....\$1267.57

Income:

Interest:..... 0.00

Expenses:..... 0.00

Current Balance.....\$1267.57

Balance on Hand:

Checking..... 163.12

Savings..... 1,267.57

Total.....1,430.69

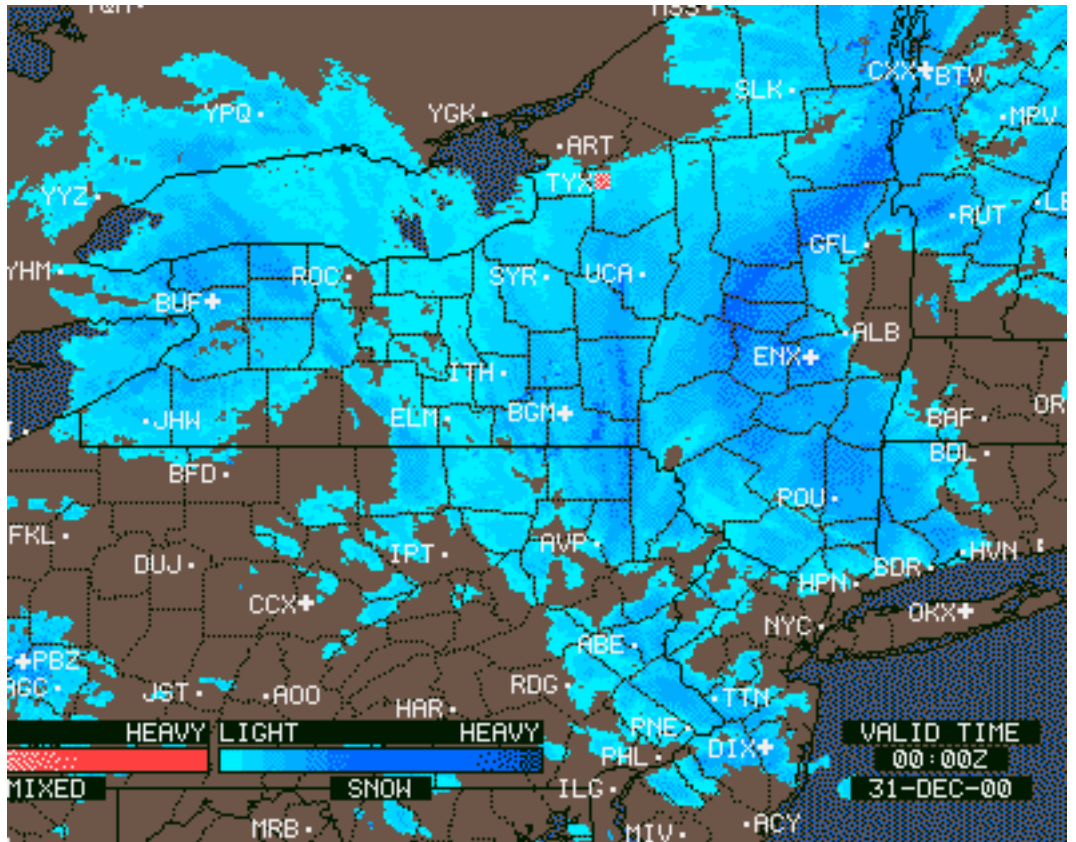
Weather Radar Web Sites

... de abciety

Looking for the perfect weather (snow, cold, high wind, etc) for installing a new antenna this winter? Want to find out what weather awaits you in Watertown if you are roving (it really does snow 12 months a year). **Check out these sites.** They are great, and can even show you the time-lapse shot just like Kevin Williams does on Channel 10, eh!

(If you aren't in the Rochester Area, just go to the main page and select your area from there.. Although the areas covered by these maps are at least 300-400 miles across.)

<http://www.intellicast.com/>



<http://www.intellicast.com/LocalWeather/World/UnitedStates/Northeast/NewYork/Rochester/Radar/>
<http://www.intellicast.com/LocalWeather/World/UnitedStates/Northeast/NewYork/Ithaca/Radar/>
<http://www.intellicast.com/LocalWeather/World/UnitedStates/Northeast/NewYork/Buffalo/Radar/>

NOAA Frequencies- downlink freq's from weather sats:

- 1) NOAA12 137.500
- 2) NOAA14 137.620
- 3) Meteor 137.300
- 4) Resurs 137.850

Data for ISS (ZARYA) International Space Station

...via KA2TYT, Norm Litsche" <nlitsche@worldnet.att.net>

Beacon: 628.000

Beacon: 632.000

Uplink: 145.990 (packet)

Uplink: 145.200 (Region 1 voice)

Uplink: 144.490 (Region 2/3 voice)

Uplink: 139.208

Uplink: 121.750

Uplink: 231.000

Downlink: 145.800 (Voice and Packet)

Downlink: 143.625 (Voice FM)

Downlink: 130.167

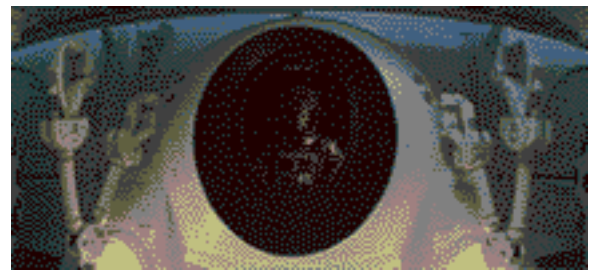
Downlink: 247.000

Downlink: 463.000 (TV)

Downlink: 436.000 (TV)

Note: Should be very visible to the naked eye, especially when most of the modules are in place in 2004.

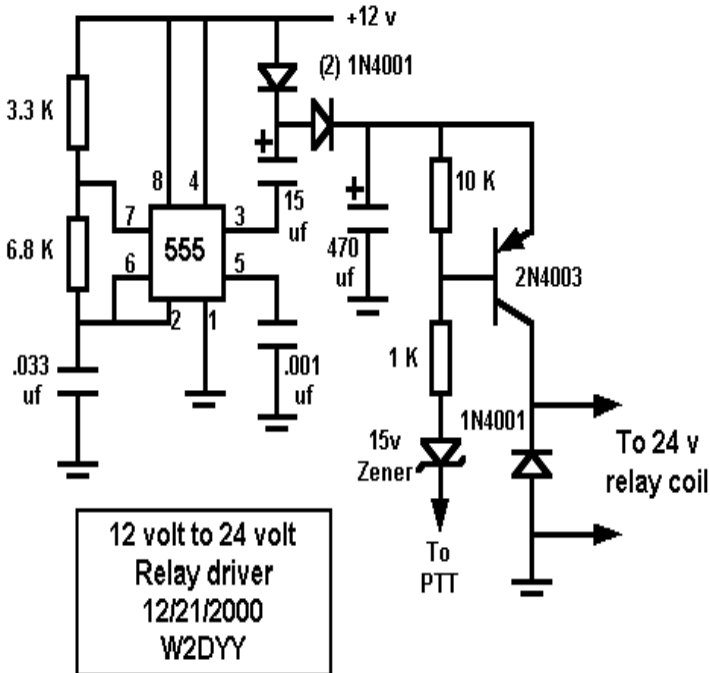
Uplinks and downlinks were to start during the month of November, 2000.



12 v to 24 relay driver

...de Russ W2DYY

I developed the following circuit several years ago to drive some BNC relays that required greater than 12 volts to pull in and hold.



The output voltage should be around 20 volts with a 50 ma load with the relay activated via the PTT line. The PTT line should be grounded to activate the relay and open (or +12 v PTT line) during receive.

For sale:

- Icom 575H, 6 and 10 meters, multi mode transceiver, EC, 100w. \$ 950.00
- Mosley TA31m, 10/15/20m. rotating dipole, full power, EC \$125.00
- Mosley TW31m, 12/17/30 m. rotating dipole, full power, EC \$125.00
- HB 2 m. 5 el. beam, new \$ 50.00
- Len "WA2ZNC", wa2znc@juno.com

=WANTED=

Motorola MRF 15090
Looking for one of these RF power transistors for my 1296 amplifier, if you know where I can get one or if have one you would like to part with let me know.
"Jim Howard" <n2jmh@arrl.net>

2001 SVHFS Conference Invitation & Call For Papers

The SOUTHEASTERN VHF SOCIETY will host its FIFTH ANNUAL CONFERENCE April 20-21, 2001 at the Holiday Inn Select-Brentwood, in Nashville TN.

The program will include presentations by antenna specialist L. B. Cebik W4RNL, EME enthusiast Bob McGraw K4TAX as well as many other VHF+ operators. Other activities in addition to the technical program/ presentations and conference proceedings include will be pre-amp noise figure testing (50-1296 MHZ.), antenna gain measurements (144-2304 MHZ.), a flea market, vendor sales displays, the SVHFS auction and annual business meeting.

This year at our Saturday Night Banquet, we are honored to have as our guest speaker noted QST columnist, Emil Pocock -W3EP, author of "The World Above 50 MHZ"

December bumper stickers:
If God Meant Us to Vote, He Would Have Given Us Candidates.
"Those who cast the votes decide nothing. Those who count the votes decide everything." -Joseph Stalin
I voted - Didn't matter
Chad happens
One person, one vote (may not apply in certain states)

Intel shrinks transistor to DNA proportions
Intel Corp. said it has built the world's smallest and fastest transistor. The chip maker said it has shrunk the basic building block of a computer's brain so much that it could fit within a strand of DNA, so small that more than 400 million could be packed into each future Intel microprocessor. That could yield a computer nearly 10 times as powerful as today's machines.
From The Globe and Mail,

MOUNTAIN SIGHTED IN W.N.Y!

As VHF/UHF/Microwave operators, we can definitely dream. We may not have a mountain available, but there are a lot of interesting hill top locations that offer DX possibilities. As a new arrival on the VHF/UHF/Microwave portable operation scene, I found that good operating site information is not readily available. There is considerable knowledge within the club based on the large number of rovers that have participated in previous multiop operations in the WNY area.

Over the last few years, the level of operation in the Rochester area has taken a drastic downturn. We need to encourage new comers to join in the fun and increase the participation level. The 10 GHz club project and the new 5.7 GHz club project is making many new stations available for operation. All the effort at getting this equipment available and operational will be to no avail if the people do not operate. Increasing the overall participation in this area can only increase contest scores, club membership and put us back on the map as a center for VHF/UHF/Microwave operation.

I presented a proposal at the December RVHFG meeting to consolidate the existing rover site knowledge base into a usable form and add it to the RVHFG Homepage. To get an idea of what I am proposing, visit <http://www.geocities.com/wb8tgy/sites.html>

I would like to list sites mainly in WNY but would also like to include NY, OH, PA, MA, VT, Canada, etc that offer paths back into the Rochester area. Each site listing would offer:

Name of location
Grid square (six digit)
Longitude
Latitude
Height
Notes: Driving directions
Access / set-up info

Good Path info
Other info of operator use
[Link to topographic map of site](#)

I have volunteered to lead the data gathering and to maintain the site page on the RVHFG homepage. The site information will only be as good as the information received. I need RVHFG members help as well as input from non-members outside the immediate area. My goal is to have the site page up and available by the June 2001 VHF Contest. I anticipate the page will grow over time as additional listings are added.

I can be reached at w2dyy@rochester.rr.com or by phone (716) 248-5453. If you have even partial site information, let me know. Someone else may be able to fill in the blanks. In the long run, everyone benefits

Russ Schroeder - W2DYY
Vice Chairman, RVHFG

ATT towers

..VE3IEY with N2DVQ

Ever hear of the ATT "Long Lines" program? Well, it was responsible for the placement of microwave link stations at 30-40 mile intervals back in the 1960's. They utilized 2,4,6 and 11 GHz broadband, running huge antennas in a fixed direction, and originally had a crew of technicians at most of the sites 24hrs a day. As a matter of fact, the sites were protected as "vital for national defense."

You see many of these stations a LONG way away- they have towers that are sometimes 300 feet tall and 30 or more feet across at the base. As a matter of fact, one is located right down the road from K2AXX's place, as well as not far from the N2PA mountaintop. These are usually GREAT rover sites, if you can get permission to get near them (many have been off-line for years, being replaced by satellite and fiber optic linking). Some have been re-activated for cellular phone use, but the cavernous buildings (some as big as a hockey rink, others the size of a one-car garage) were designed for tube or hybrid gear... today's microprocessor and transistor equipment takes up a fraction of the space for greater performance only dreamed of in the 1960's

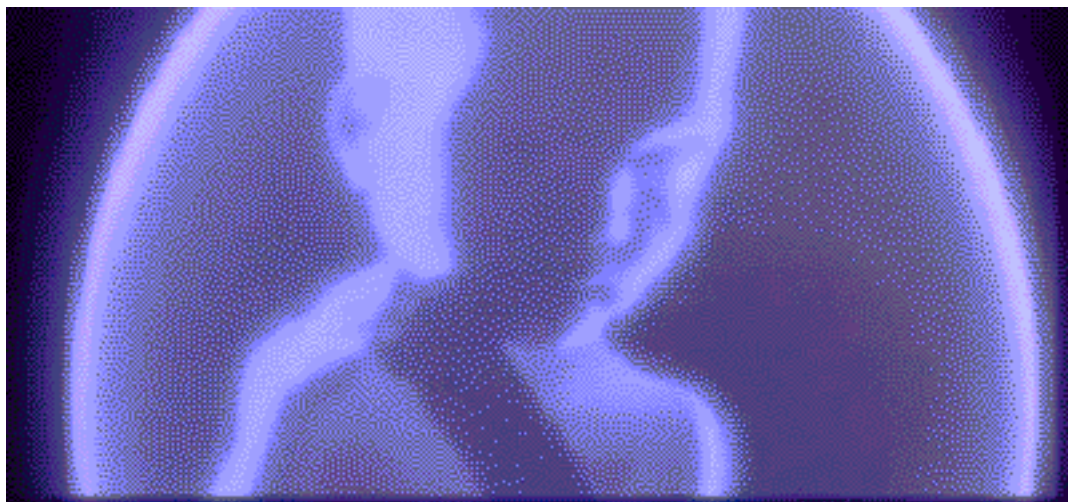
Here is a nice site on ATT long lines towers.
<http://www.stillyoung.com/towers.html>

**The Rochester VHF Group collectors edition
2001 Commemorative Issue**

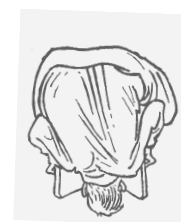
**Combine Two Great
Literary Classics
and here's what
you get:**

**“2001:
A Space Iliad”**

The HAL 9000 computer wages an insane 10- year war against the Greeks after falling victim to the Y2K bug.



THE JANUARY VHF SS IS ONLY 2 WEEKS AWAY- ARE YOU READY????



**The VHF Journal
The Rochester VHF Group
PO Box 92122
Rochester, NY 14692**